



Made in Italy

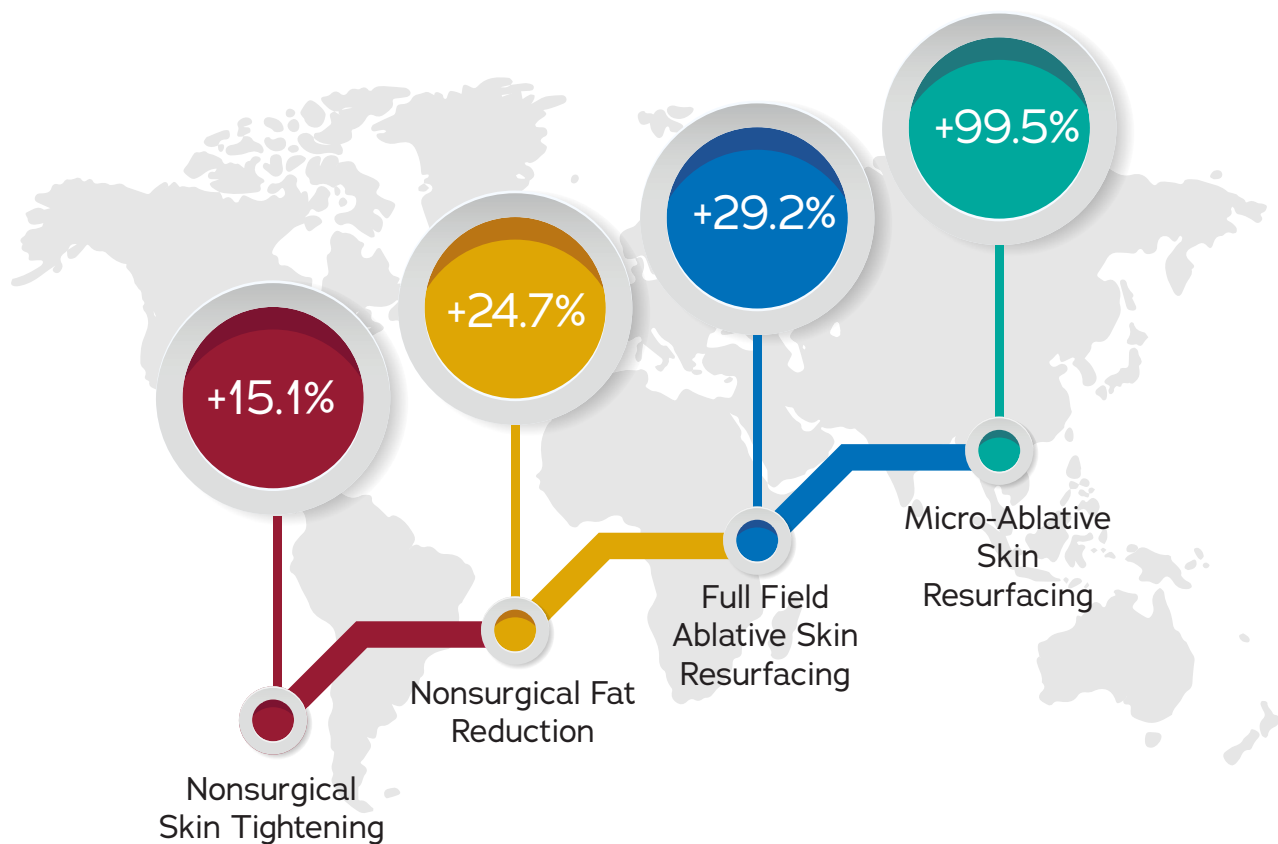
THE

MULTIPLE AND  
COMBINED THERMAL  
ENERGIES THAT  
COMPOSE THE  
**“PUZZLE OF  
BEAUTY”**  
FOR A COMPLETE  
REJUVENATION  
OF THE BODY

by  
**GIMIV**

# OPTIMIZE TO GO THROUGH THE CURRENT THERMAL TECHNOLOGIES

The nonsurgical procedures that saw the most significant increases



Source: American Society for Aesthetic Plastic Surgery (2017)



# A NEW TECHNOLOGY TO SATISFY THE PATIENT'S NEEDS

+4.2%

Increase in nonsurgical  
procedures in  
Aesthetic Medicine





# SCIENTIFIC RATIONALE

**The overall collagen content per unit area of the skin surface is known to decline approximately 1%/year.**

[Shuster S, et al. The influence of age and sex on skin thickness, skin collagen and density]

**Up to 98% of females are concerned about their skin changes due to cellulite and the changes decrease their self-esteem.**

[Pavicic T, Borelli C, Korting HC. Cellulite—the greatest skin problem in healthy people? An approach]. J Dtsch Dermatol Ges]

**With increased life expectancy, the impact of vulvovaginal atrophy (VVA) on the quality of life, sexual function, and pelvic floor health is becoming more evident in the present practice of medicine.**

[Naumova I, Castelo-Branco C. Current treatment options for postmenopausal vaginal atrophy. Int J Womens Health]



## 3 INNOVATIVE TECHNOLOGIES

## 10 OPERATING MODES

A MULTIPLICITY OF TREATMENTS FOR THE WHOLE BODY UNIQUE IN THE WORLD WITH ONLY ONE DEVICE

- **Multiwave:** 6 operating modes that makes Thuzzle the only device in the world capable of delivering up to four electromagnetic waves interlinked and controlled at four different depths.
- **Radial fractional:** two operating modes for a double effect of volumetric heating of the dermis and for the remodeling of the collagen.
- **Gynecological Multi modal:** the two operating modes, monopolar deep and bipolar superficial, make a stimulation for vaginal and vulvar rejuvenation. The heating of the tissue returns tone and elasticity to the same, restoring the correct functionality.

# ONE DEVICE, LOTS OF TREATMENTS

## RADIAL FRACTIONAL

- Skin spots of all types
- Retraction
- Lifting
- Acne scars
- Coarse texture
- Resurfacing treatments
- Elastosis
- Lipolysis and deep lipolysis
- Vascularization
- Lymphatic drainage

## MULTIWAVE

- Retraction and Neocollagenesis
- Lipolysis and deep lipolysis
- Vascularization
- Lymphatic drainage
- Vulvar regeneration
- Reduction of the adipose layer  
and edematous fibrosclerotic  
panniculopathy

## GYNAECOLOGICAL MULTI MODAL

### **Lubrication and Neocollagenesis**

- Atrophy
- Restoring caliber and tone of the  
vaginal canal
- Stimulation of collagen and elastin  
production

### **Continence and Vascularization**

- Functional disorders
- Vaginal prolapse
- Clitoral vascularization
- Microcirculation improvement
- Thickening of the deep dermis
- Treatment of urinary incontinence



- Online temperature control on all handpieces and instant display for the safety and maximum effectiveness of each treatment

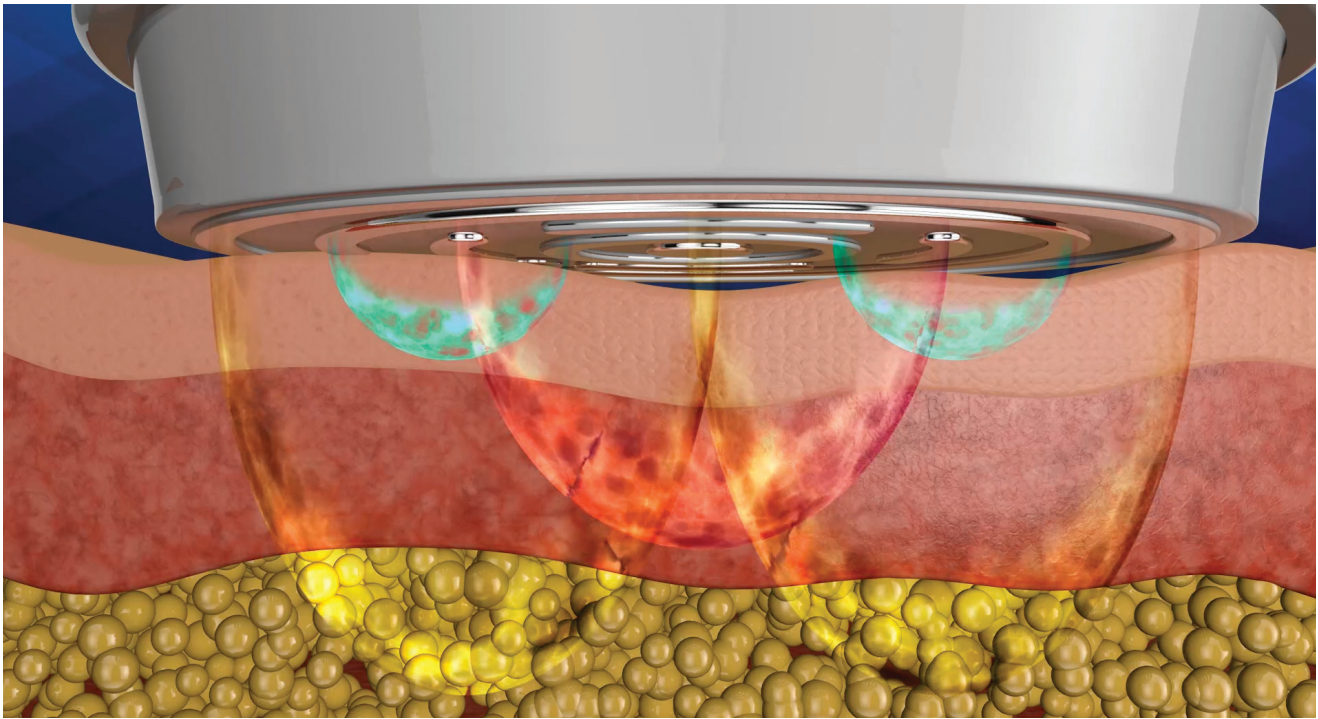
- Motion control with accelerometers: the handpieces do not deliver energy if the treatment is not performed correctly

- Recognition of the skin: the handpieces do not deliver energy if they are not in contact with the patient's skin

**MAXIMUM SAFETY AND  
EFFICACY FOR  
DOCTOR AND PATIENT**



# MULTI WAVE TECHNOLOGY



**+30%**

**P**erformance improvement\* compared to current devices on the market that uses thermal technology



**92%**

**P**atient satisfaction since the first treatment



**R**eliability of the device: the materials used allow high performances and at the same time increase the life of the individual components



**E**ase of use: user-friendly interface that guides the operator from the beginning to the end of each treatment

\* preliminary results obtained by realizing different treatments with the same number of sessions with Thuzzle and other medical devices that use thermal technology



# Four thermal energies at different depths at the same time

## TETRA WAVE HANDPIECE

### Ideal for:

- Abdomen
- Hips
- Gluteus
- Legs

### MAIN APPLICATIONS

Elastic retraction  
Neocollagenesis  
Vascular Activation  
Deep Lipolysis

Monitor for instant display of parameters



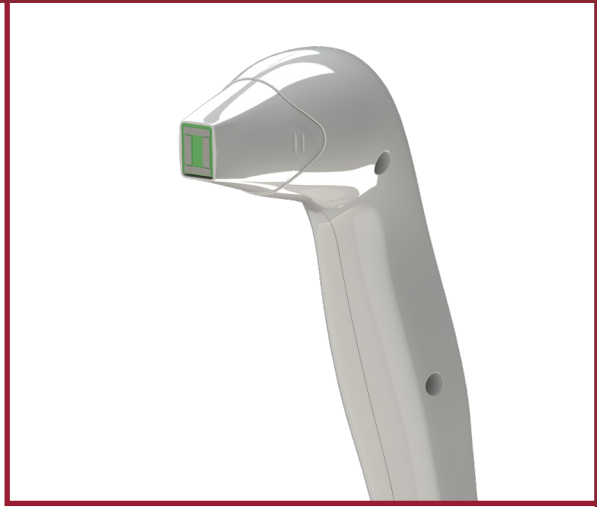
TRIPLE WAVE  
HANDPIECE



**Ideal for:**

- Decolleté
- Arms
- Knees

DOUBLE WAVE  
HANDPIECE

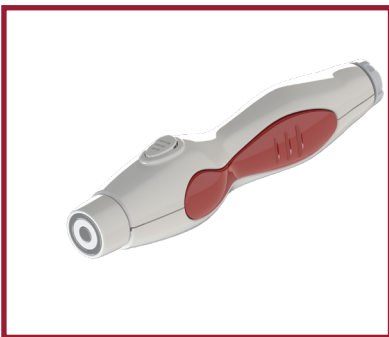


**Ideal for:**

- Periocular region
- Perioral region
- Vulvar region

**MAIN APPLICATIONS**

Elastic retraction and Neocollagenesis  
Lipolysis  
Vascularization  
Lymphatic drainage



SUPERFICIAL  
SINGLE WAVE HANDPIECE  
**Retraction and  
neocollagenesis specific  
for face**



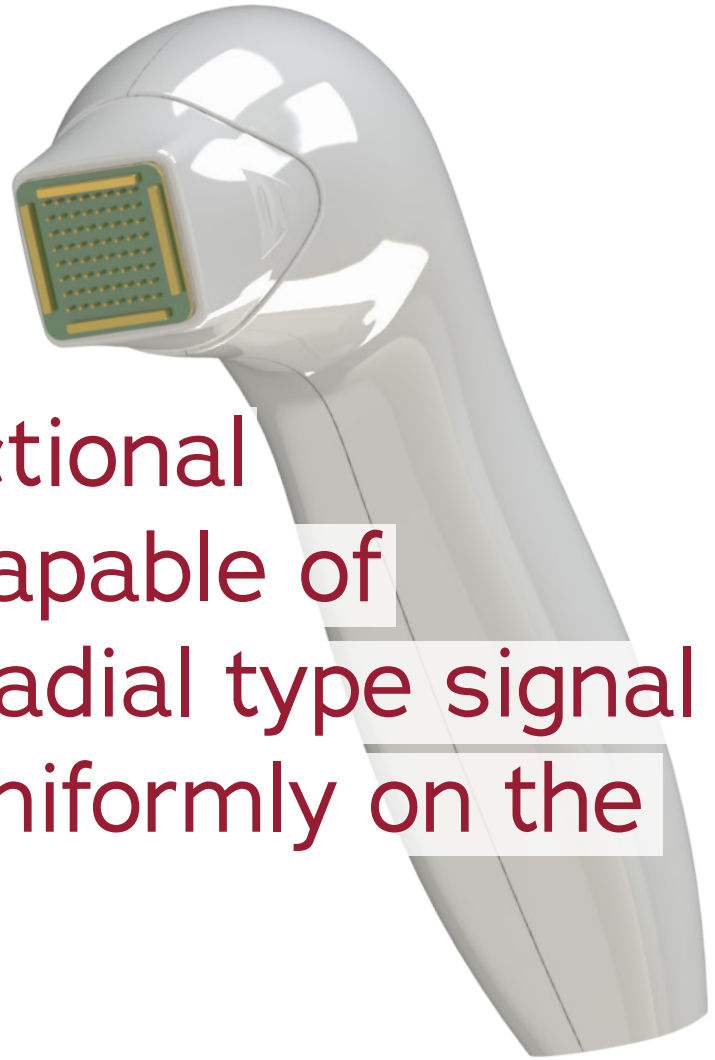
DEEP  
SINGLE WAVE HANDPIECE  
**Lymphatic drainage  
diffused and selective**







# RADIAL FRACTIONAL HANDPIECE



The only fractional technology capable of delivering a radial type signal which acts uniformly on the tissue

## Ideal for:

- Face
- Neck
- Decolleté

- High performance applied parts
- Impedence control
- Control of exact energy delivered into the tissue and duration of the spot

## MAIN APPLICATIONS

Skin spots  
Retraction  
Lifting  
Acne scars  
Coarse texture  
Resurfacing treatments  
elastosis



Advantages compared to other technologies that perform the same type of treatments:

- + Less pain perceived by the patient than Laser (CO<sub>2</sub>) and HIFU
  - + Not dependent on the type of skin as for the Laser
- + The direction of the inverted flow with respect to the Laser involves a minor superficial damage on the skin
  - + Reduced costs even for single components



# GYNAECOLOGICAL HANDPIECE

# Tightening, rejuvenation and vascularization of vaginal tissue

## MAIN APPLICATIONS

### Lubrication and Neocollagenesis

Atrophy  
Restoring caliber and tone of the vaginal canal  
Stimulation of collagen and elastin production

### Continance and Vascularization

Treatment of urinary incontinence  
Functional disorders  
Vaginal prolapse  
Clitoral vascularization  
Microcirculation improvement  
Thickening of the deep dermis

### Ideal for:

- Vulvovaginal atrophy
- Stress incontinence
- Sexual dysfunction

1 handpiece - 2 applied parts,  
superficial and deep heating



Advantages compared to other technologies that perform the same type of treatments (Laser):

- + Greater depth of action
- + Faster lubrication of the vaginal canal
- + Less invasive
- + Reduced costs even for single components

Single-patient probe: maximum safety, comfort, fast recovery times and no side effect

Thanks to its exclusive patented technology, THUZZLE optimizes the simultaneous controlled electromagnetic multi-energy for diathermy according to the body's district and the necessary treatment.

Thuzzle is therefore the only device capable of generating waves in the entire spectrum of the medium frequencies at the same time, ensuring a uniform distribution of energy over the whole area to be treated.

## **SAFE AND EFFECTIVE TREATMENTS, VISIBLE RESULTS SINCE THE FIRST SESSION**



CE 0051

# GMV

## PLASMA PIONEERS IN AESTHETIC MEDICINE ALWAYS ON TOP IN THE DEVELOPMENT OF NEW TECHNOLOGIES

GMV is famous all over the world for introducing plasma technology in aesthetic medicine. The Plexr plasma medical device was the first device to be used for minimally invasive procedures. With over ten years of scientific research, Plexr has proven to be safe for clinical use.

GMV has always been dedicated to the development of new technologies at the service of doctors and patients.

- ISO 9001 and EN ISO 13485 quality management certifications
- Devices, certified according to Directive 93/42 / EEC for medical devices
- Creation of devices entirely in-house, from the idea and the prototype, to production and sales
- Constant technical and training assistance for doctors

## TECHNICAL SPECIFICATION

TECHNOLOGY	PARAMETERS	VALUE
Tetra wave	Output power Output frequency	From 0 to 200 W From 500 KHz to 2.4 MHz
Triple wave	Output power Output frequency	From 0 to 150 W From 500 KHz to 2.4 MHz
Double wave	Output power Output frequency	From 0 to 100 W From 1.3 MHz to 2.4 MHz
Single wave	Output power Output frequency	From 0 to 50 W 900 KHz
Vaginal	Output power Output frequency	From 0 to 50 W 900 KHz
Fractional	Energy released	From 0 to 10 J



# GIMIV

[WWW.GRUPPOGMV.COM](http://WWW.GRUPPOGMV.COM)



ISO 9001:2015  
ISO 13485:2016